



SUPERCHUTE®

SOLUTIONS FOR CONSTRUCTION & INDUSTRY



COLUMN FORMS

Reusable Round Plastic Forms

Factory Line: 800-363-2488
www.superchute.com

ROUND COLUMN FORMS



Straight-Sided Forms

- Available in any size
- Combine forms to achieve greater diameters
- The forms are shipped as flat sheets



Staggered Forms

- Staggered design allows for greater form heights and does not require any extra hardware
- Pour rate must be adjusted accordingly
- Staggered forms can be made to any height



Bulbous Forms

- Custom Bulbous Forms are made to desired height & diameter
- Quick assembly – aluminum clasps with speed bolts allow for a firm seal
- Form lays flat for easy storage & shipping



Tapered Form (with clasp)

- Used to create a tapered column
- The form is conical built to your dimensional requirements



Tapered Forms (without clasp)

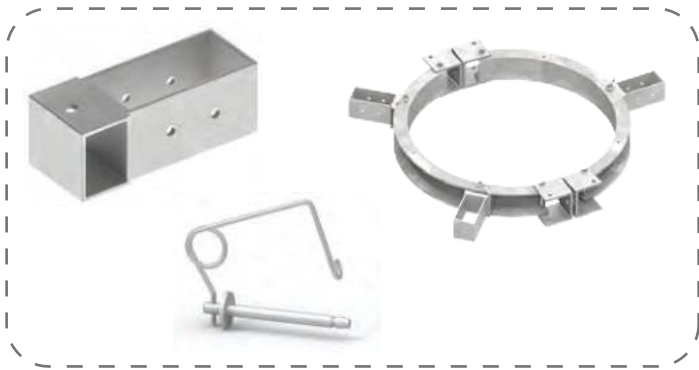
- Quick release sand castle form without a clasp – concrete simply slips off after curing
- Form is conical built to your dimensional requirements (max height 59")



Custom Forms

- Custom designed forms made to desired height & diameter
- Quick assembly – aluminum clasps with speed bolts allow for a firm seal
- Unaffected by cold, heat, water & chemicals

COLLARS

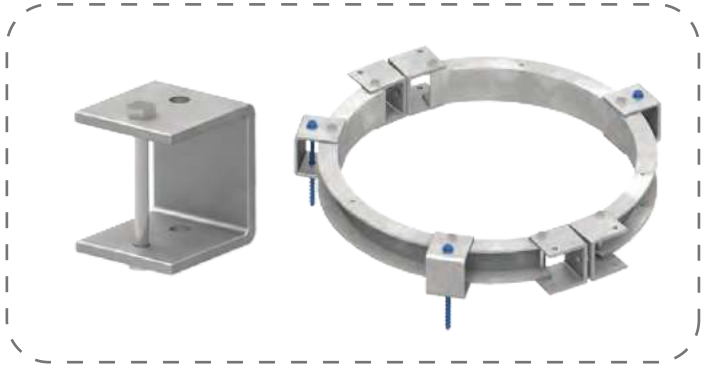


Bracing Collar & Brace Brackets

- Attach Bracing Collar on top to secure and level the form
- Use supplied pins and brace with wood studs

Bracing Collar & Anchor Brackets

- Use the Bracing Collar to secure the form to the ground
- Use supplied HILTI Screw Anchors



Why choose a Superchute® Form?

Superchute® has a leg up on the competition, our forms are made with durable polyethylene plastic. The plastic used for our forms have a slippery surface that can be washed clean, so you can re-use the forms multiple times.

The forms are unaffected by cold, heat, water and chemicals. Remove the bolts joining each panel, for easy storage and transportation. Most importantly of all our forms are easy to use.

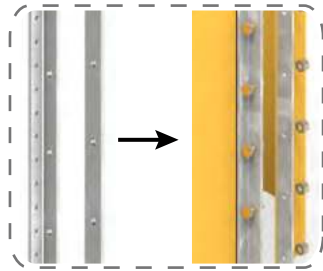
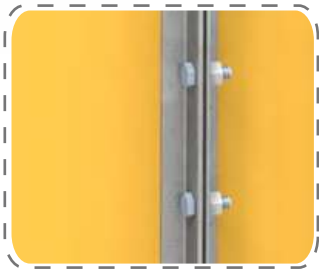
Sample applications

- Columns ✓
- Lightpole bases ✓
- Foundation footings ✓
- Pier posts ✓
- Collars or jackets for column repair ✓
- Bleacher bases ✓
- Grade rings ✓
- Voids ✓

Name Branding



CLASPS

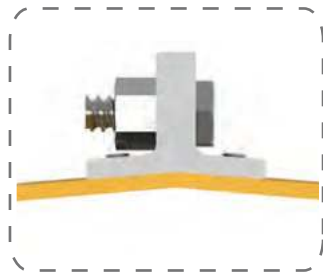


Aluminum Clasp and Speed Bolts

The vertical seams are joined by a pair of 3/16" x 1.5" x 1.125" 95° aluminum angles. This allows the form to have a continuously round shape. The pair of aluminum clasps are joined using speed bolts and nuts fastened to create a tight seal.



Button Head Rivet



Countersunk Flat Head Rivet

Clasp Rivet

The aluminum clasps are joined to the plastic walls using one of 2 rivet head styles, Button Head & Flat Head Rivet for shallow dimpled imprints or smooth concrete surface finish.

**DURABLE
REUSABLE**

www.superchute.com
Toll Free: 800-363-2488
Local: 514-365-6121
Fax: 514-365-8987
E-Mail: info@superchute.com



Superchute Ltd.
8810 Elmslie Road
Montreal, Quebec
Canada, H8R 1V6

- Made in Canada
- Consult the Superchute® reference guide or manual for more information
- For clients in the USA: Free Trade applies - No import duties or taxes
- Superchute® is a registered trademark of Superchute Ltd. (US Trademark 1737832)
- Printed in Canada