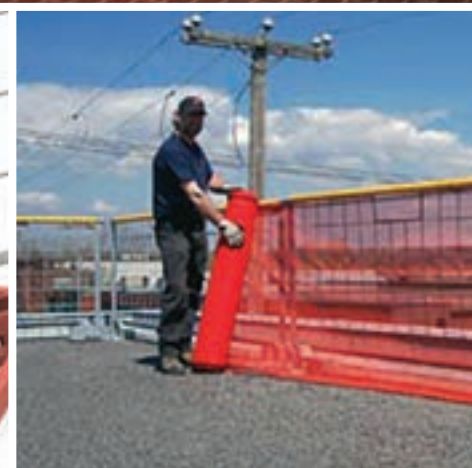




SUPERCHUTE®

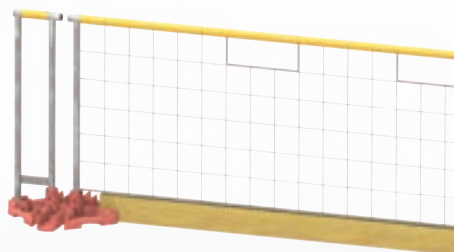
SOLUTIONS FOR CONSTRUCTION & INDUSTRY



EDGEGUARD® SYSTEM

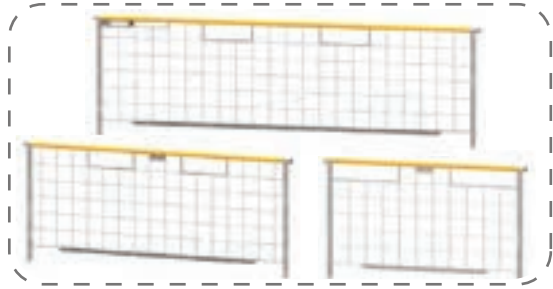
Why choose EdgeGuard®?

- Speedy and ultra safe solution to worker fall protection ✓
- Fully meshed rails, stackable base weights ✓
- For use on flat decks with unprotected edges (roofs, slabs, shafts, stairwells, skylights) ✓
- Designed for roofers, contractors, rental stores, construction & safety supply retailers ✓
- Full compliance with OSHA (Occupational Safety & Health Administration) ✓
- Prevents people & materials from falling through or between rails - No large gaps ✓
- Quickly attach Scafnet® to EdgeGuard™ rails to control fine debris and dust ✓



Factory Line: 800-363-2488
www.superchute.com

STANDARD RAILS



Full, 3/4 & 1/2 Length Rails
Full length: 11 ft long x 42 in. tall



Full, 3/4 & 1/2 High Clearance Rails
Full length: 11 ft long x 42 in. tall

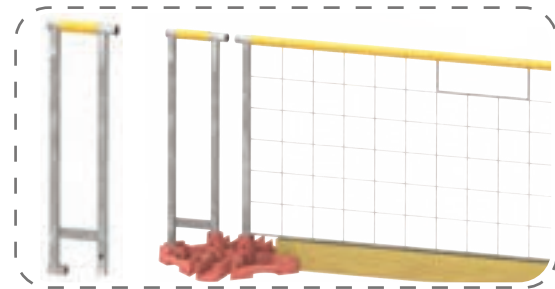


Clear Canister with Manual

Other Features

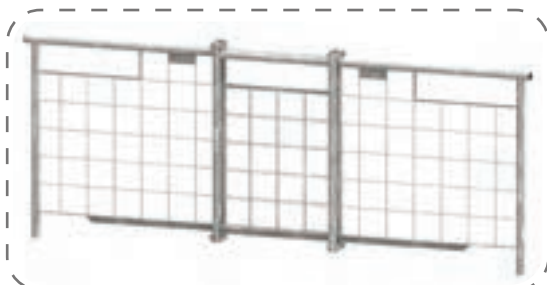
- Clear canister for instruction manual found on 11' standard rails
- Yellow toprail identifies the protected area (heavy duty plastic sleeve)
- Rails stamped with a unique serial number for traceability
- Rails are pinned or locked to weights - 2 standard pins supplied with every weight

FINISHING RAILS

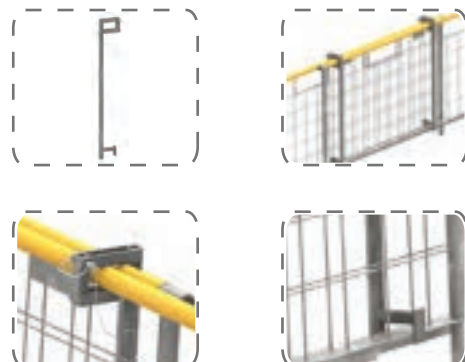


End Rail

ADJUSTABLE RAILS



Adjustable Rail

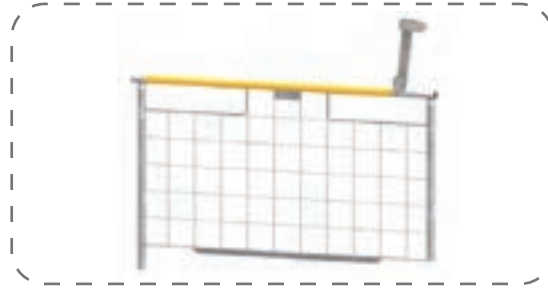


Overlap End Clamps

GATES



Gate Pair



Single Gate

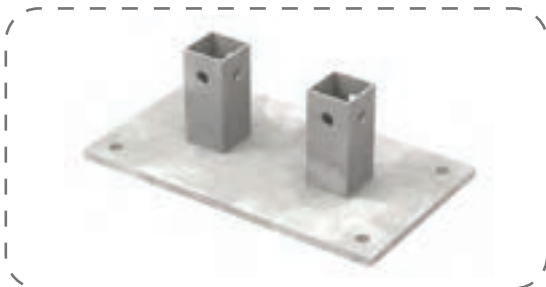


Gate Brace

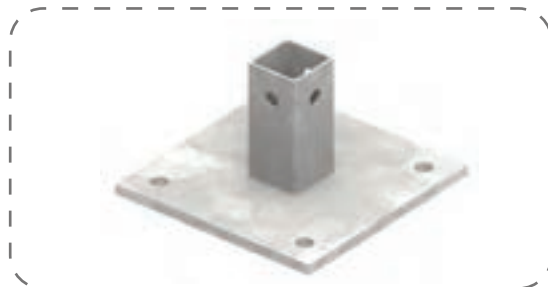
Details

- **Gate Pair:** two gates can replace a Full Length Standard Rail without any adjustment of the base weights; gate latch can be padlocked for secure latch closure.
- **Single Gate:** gate latch can be padlocked for secure latch closure.
- **Gate Brace:** supports the gate, eliminates gate sag & enhances the pivot action; useful where the gate is constantly opened and closed; allows the gate to be padlocked to the adjacent rail.

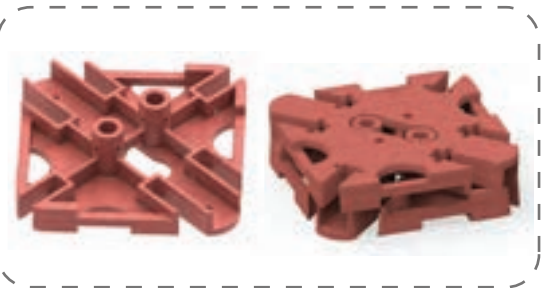
BASES



Bolt Down Base (for 2 posts)



Bolt Down Base (for 1 post)

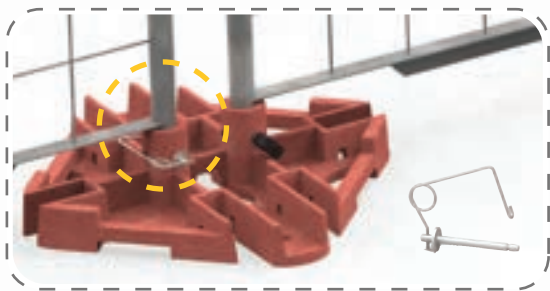


Counterweight Base
(standalone & stacked)

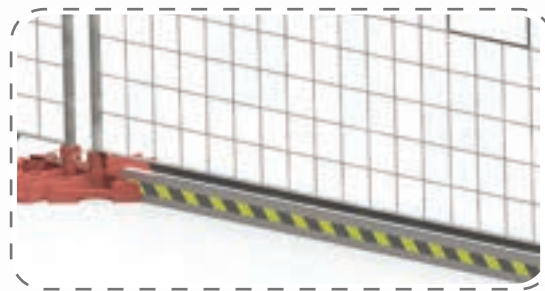
Counterweight Base Features

- 110 lb cast iron counterweight - 21" x 21" square
- Two female hubs allow rails to be installed and pinned at 180°, 90° and 45°
- Six toeboard brackets accept uncut 2" x 4" x 10' wood studs at 180°, 90° and 45°

PINS & TOEBOARDS



Standard Pin



Aluminum Toeboard

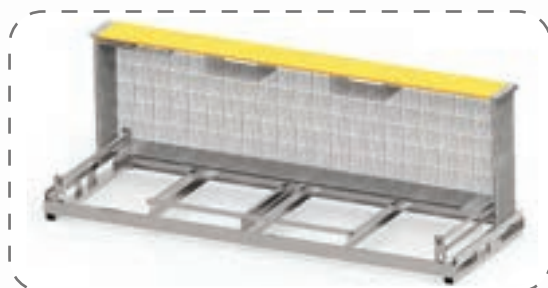
TRANSPORT & HANDLING



Transporter



5 Rail Cart



20 Rail Steel Pallet

www.superchute.com
Toll Free: 800-363-2488
Local: 514-365-6121
Fax: 514-365-8987
E-Mail: info@superchute.com

Superchute Ltd.
8810 Elmslie Road
Montreal, Quebec
Canada, H8R 1V6



- Made in Canada
- Consult the Superchute® reference guide or manual for more information
- For clients in the USA: Free Trade applies - No import duties or taxes
- Superchute® is a registered trademark of Superchute Ltd. (US Trademark 1737832)
- EdgeGuard® is a patented & registered trademark of Superchute Ltd. (CND Trademark TMA634543 US Trademark 3048889)
- Printed in Canada