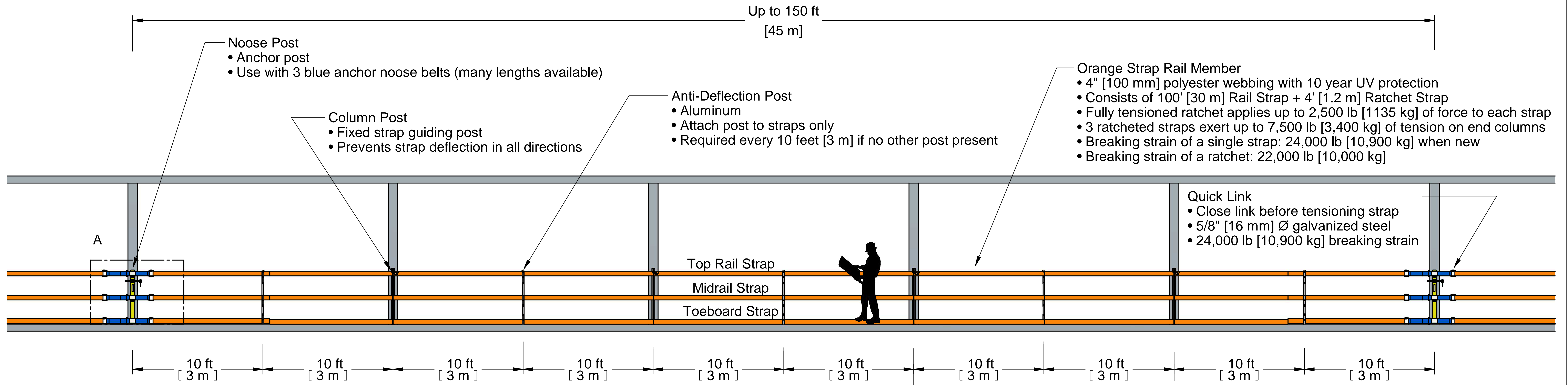


Drawing E: Using 2 Noose Posts & 6 Noose Belts to Anchor up to 150' x 45" [45 m x 1.14 m] Guardrail

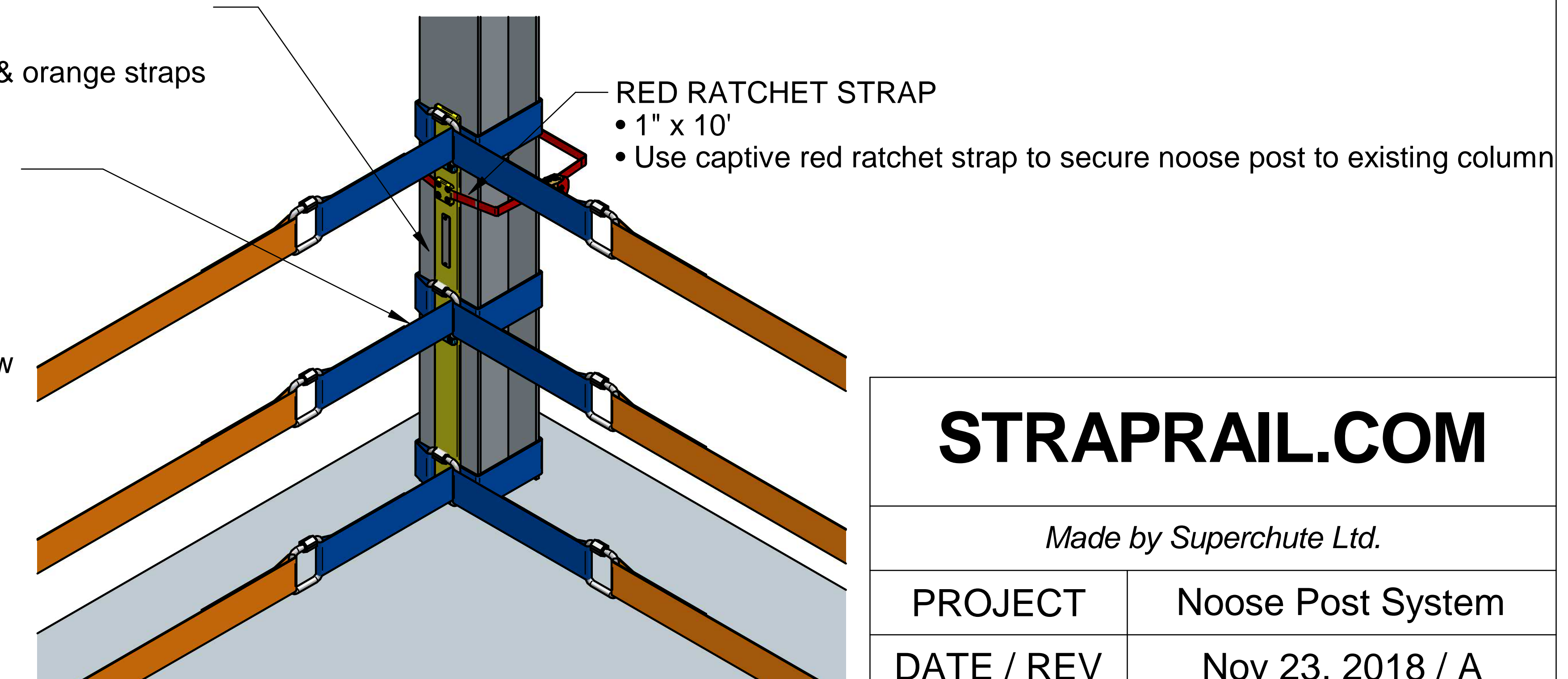
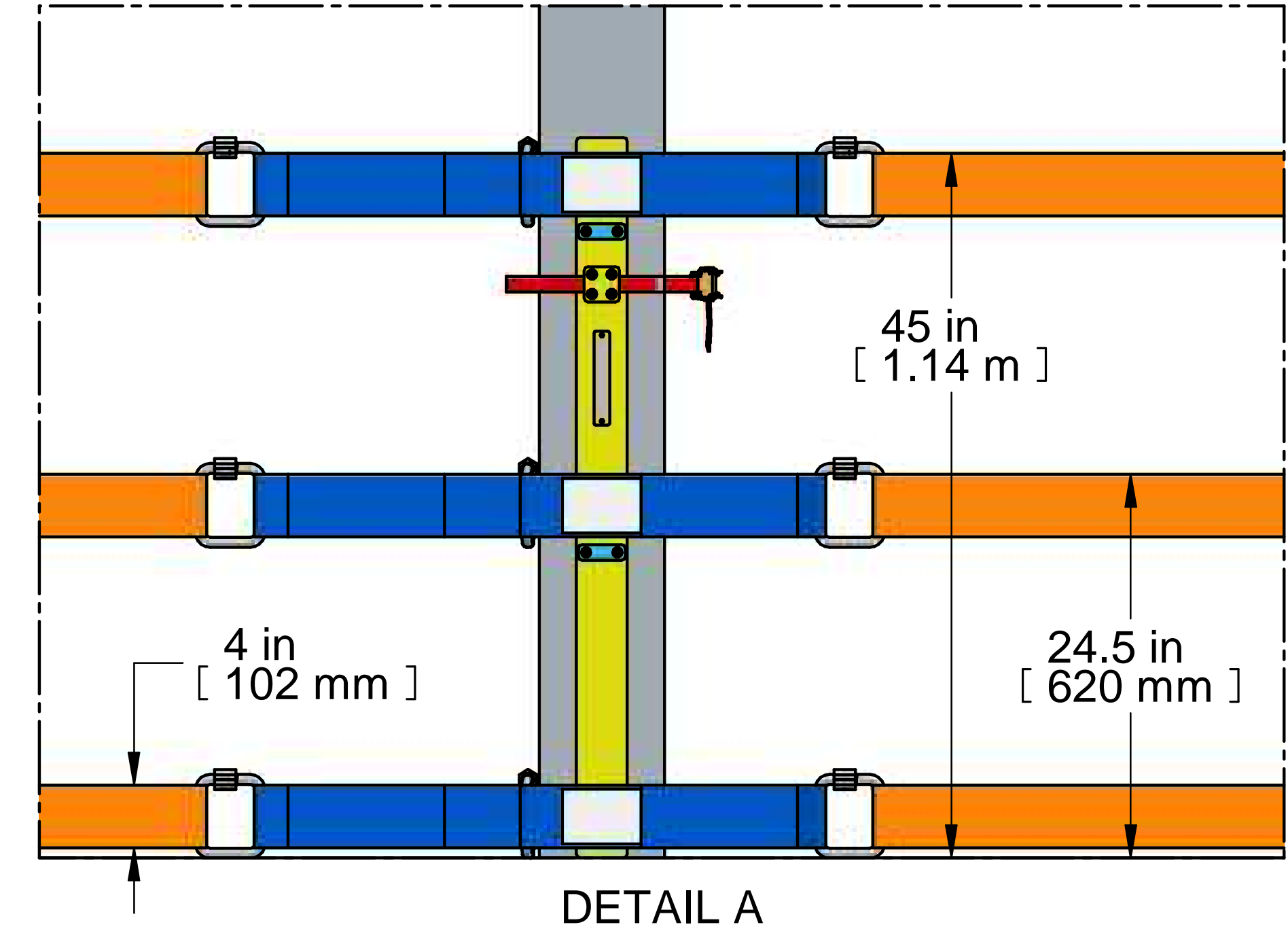
- A structural engineer must verify the adequacy of the supporting structure.
- Existing steel or concrete columns must be capable of withstanding 3 times the strap tension (based on 3 straps, each strap tensioned to 2,500 lb).
 - No tools are needed for the installation of StrapRail Column Posts.

The 45" tall guardrail can be overlaid with optional StrapRail Debris Net, which is secured every 5 feet to the toeboard and toprail straps with disposable nylon ties. The addition of netting reduces the risk of objects falling or blowing through the guardrail and injuring persons below.



- YELLOW NOOSE POST**
- Plastic height gauge post
 - The post is required to set the heights of the blue belts & orange straps
 - Use on existing columns in steel or concrete only.

- BLUE COLUMN NOOSE BELT x 3**
- Dual leg design
 - 4" Heavy Wear Sling Grade Polyester Webbing
 - For corner or inline configurations
 - Add or remove lengths without affecting adjacent installations.
 - Use on existing columns in steel or concrete only.
 - Breaking strain of blue polyester web: 39,200 lb [18,000 kg] when new



STRAPRAIL.COM	
<i>Made by Superchute Ltd.</i>	
PROJECT	Noose Post System
DATE / REV	Nov 23, 2018 / A
PHONE	1-800-363-2488