

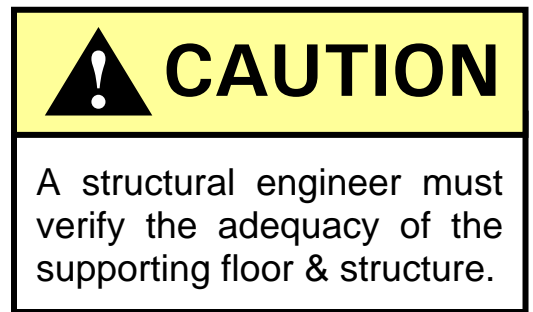
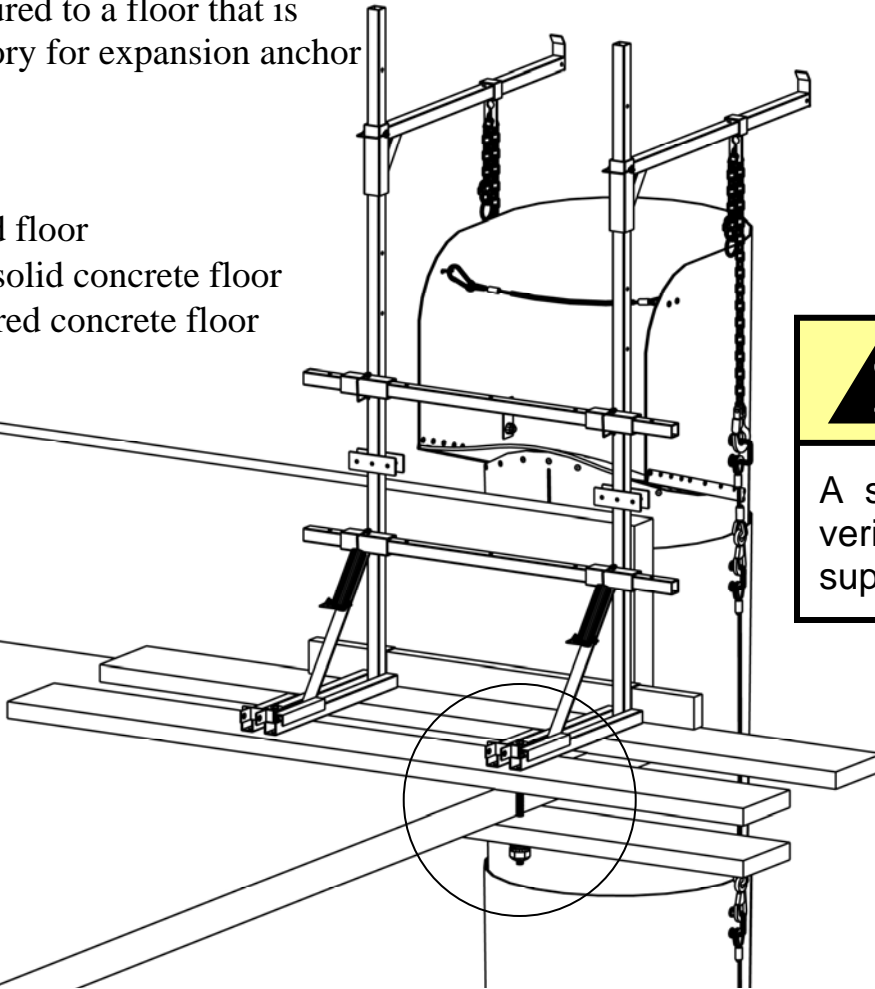
Superchute[®] Bolt Down Frame

Installation with Superchute[®] Thru-Bolts

For installations where the frame will be secured to a floor that is unsatisfactory for expansion anchor bolts.

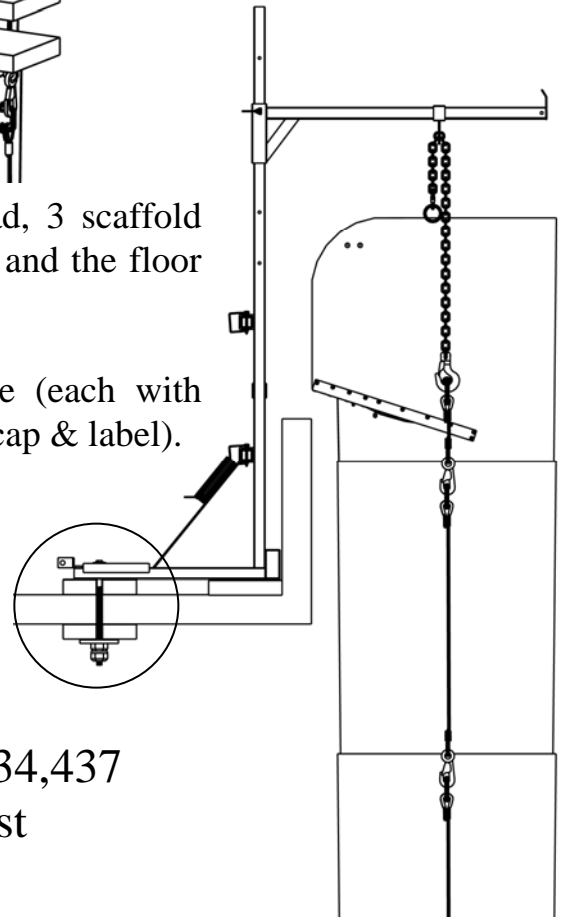
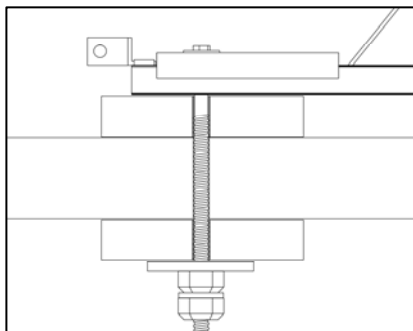
Examples:

- wood floor
- non-solid concrete floor
- covered concrete floor



The frame is bolted through the floor. To spread the load, 3 scaffold planks (2" x 10" x 96") are installed: 2 between the frame and the floor surface, and 1 on the underside of the floor.

Two 3/4" dia. threaded rods are used to secure the frame (each with backing plate, flat washer, lock washer, 2 hex nuts, warning cap & label).



U.S. Patent 5,934,437
Chute Hoist