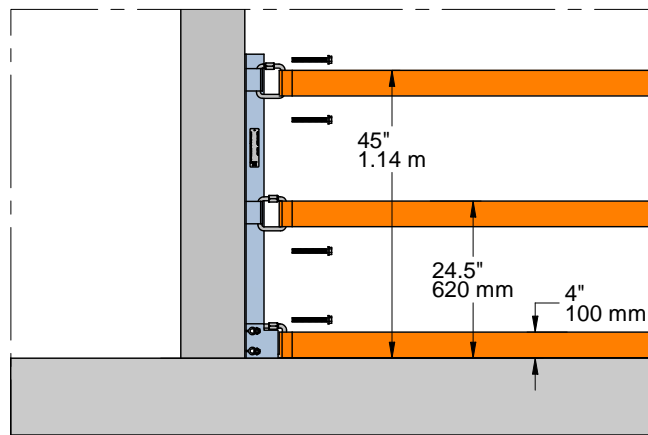
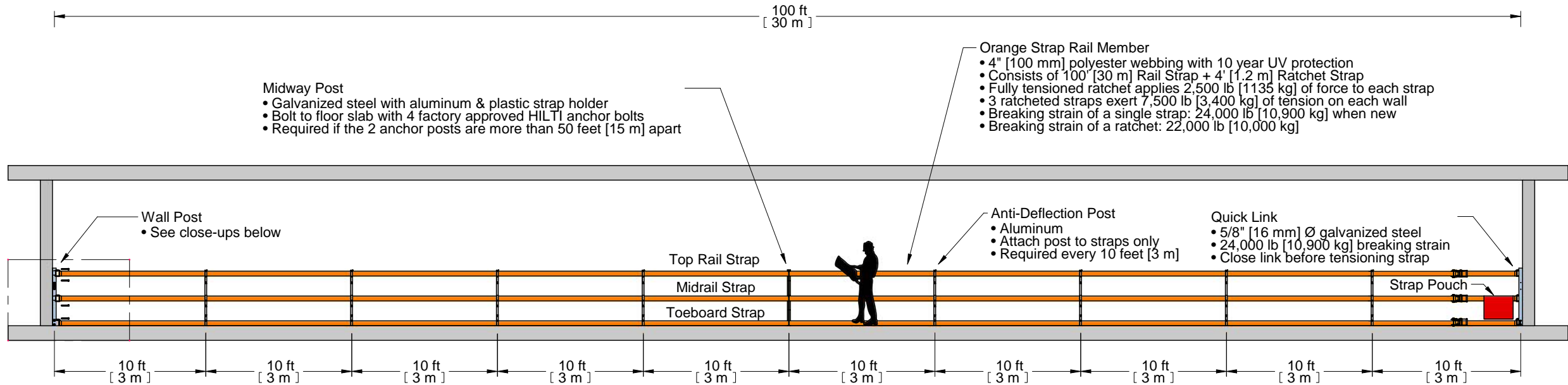


Drawing B: Using 2 Wall Posts to Anchor a 100' x 45" [30 m x 1.14 m] Guardrail System

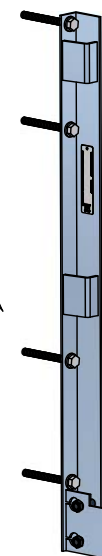
- A structural engineer must verify the adequacy of the supporting structure.
- Wall posts have a safety factor of 3:1 (based on straps tensioned to 2,500 lb each).
- Must be anchored to a structurally adequate poured concrete wall (minimum thickness 6").

The 45" tall guardrail can be overlaid with optional StrapRail Debris Net, which is secured every 5 feet to the toeboard and toprail straps with disposable nylon ties. The addition of netting reduces the risk of objects falling or blowing through the guardrail and injuring persons below.



Factory Approved Anchor Bolt Models:

- HILTI HUS KH-EZ
- HILTI HSL-3 M12/25
- HILTI HSL-B M12/25
- HILTI HSL-I M12 65/80
- STRAPRAIL SC-TB-17
- STRAPRAIL SC-TB-35



- WALL POST**
- Galvanized steel anchor post
 - Drill and bolt the wall post to a structurally adequate poured concrete wall
 - Requires 4 factory approved anchor bolts
 - Choice of 3 other anchor posts: Inline Post, Corner Post, Column Post

STRAPRAIL.COM	
<i>Made by Superchute Ltd.</i>	
PROJECT	Wall Post System
DATE / REV	May 4, 2011 / A
PHONE	1-800-363-2468