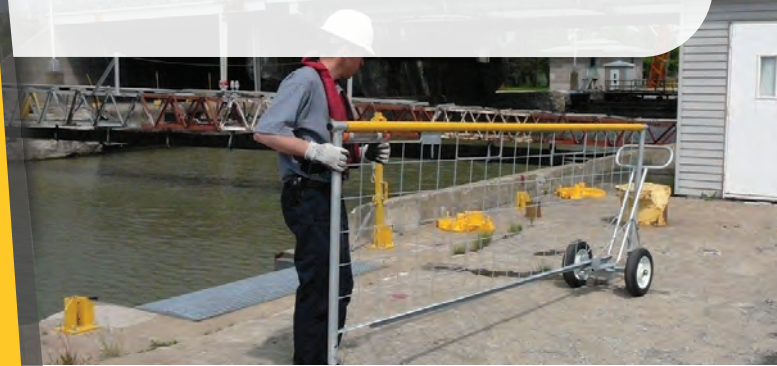




**SUPERCHUTE®**

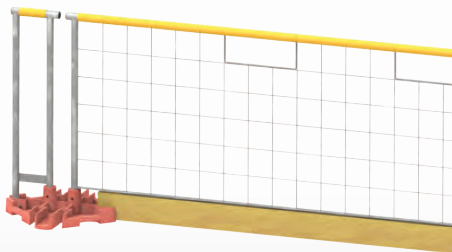
SOLUTIONS FOR CONSTRUCTION & INDUSTRY



## EDGE GUARD® SYSTEM

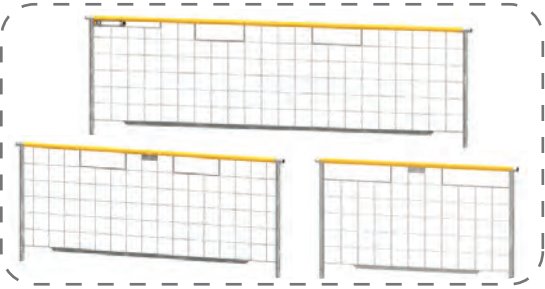
### Why choose EdgeGuard®?

- Speedy and ultra safe solution to worker fall protection ✓
- Fully meshed rails, stackable base weights ✓
- For use on flat decks with unprotected edges (roofs, slabs, shafts, stairwells, skylights) ✓
- Designed for roofers, contractors, rental stores, construction & safety supply retailers ✓
- Full compliance with OSHA (Occupational Safety & Health Administration) ✓
- Prevents people & materials from falling through or between rails - No large gaps ✓
- Quickly attach Scafnet® to EdgeGuard™ rails to control fine debris and dust ✓

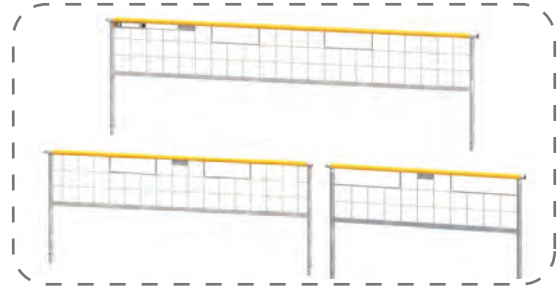


Factory Line: 800-363-2488  
[www.superchute.com](http://www.superchute.com)

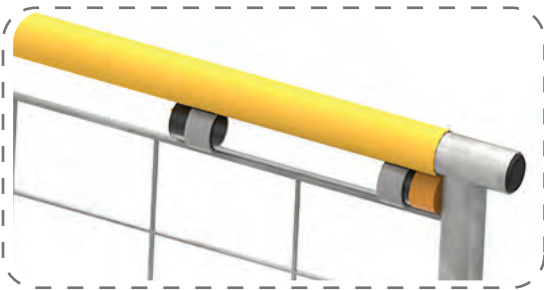
# STANDARD RAILS



**Full, 3/4 & 1/2 Length Rails**  
Full length: 11 ft long x 42 in. tall



**Full, 3/4 & 1/2 High Clearance Rails**  
Full length: 11 ft long x 42 in. tall

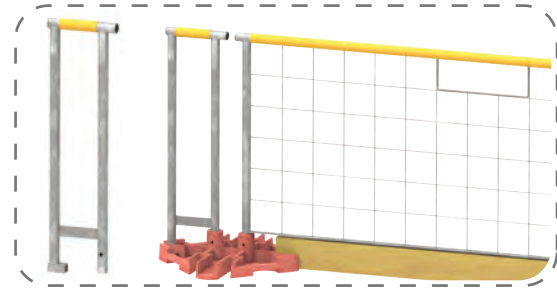


**Clear Canister with Manual**

## Other Features

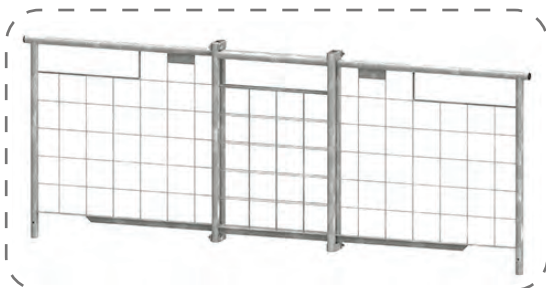
- Clear canister for instruction manual found on 11' standard rails
- Yellow toprail identifies the protected area (heavy duty plastic sleeve)
- Rails stamped with a unique serial number for traceability
- Rails are pinned or locked to weights - 2 standard pins supplied with every weight

# FINISHING RAILS



**End Rail**

# ADJUSTABLE RAILS

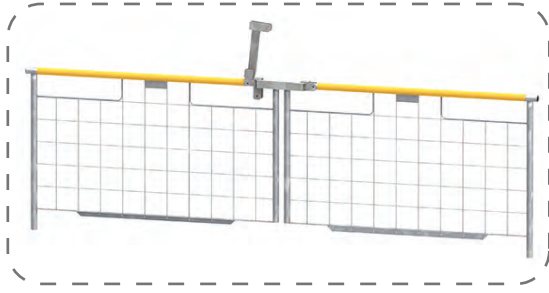


**Adjustable Rail**

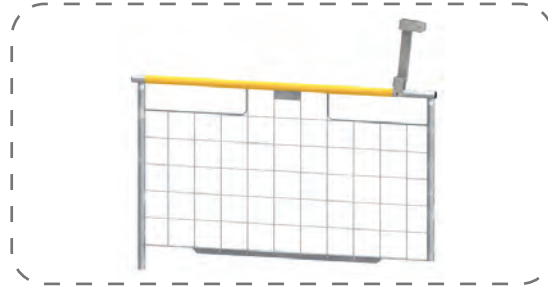


**Overlap End Clamps**

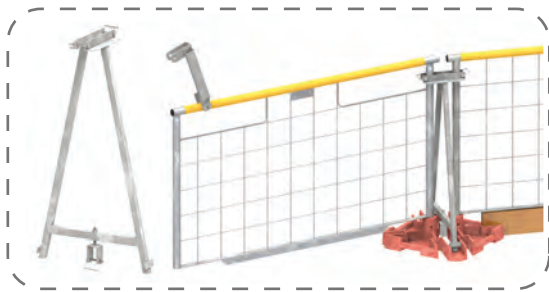
# GATES



Gate Pair



Single Gate

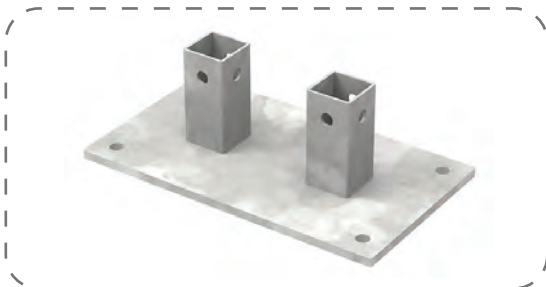


Gate Brace

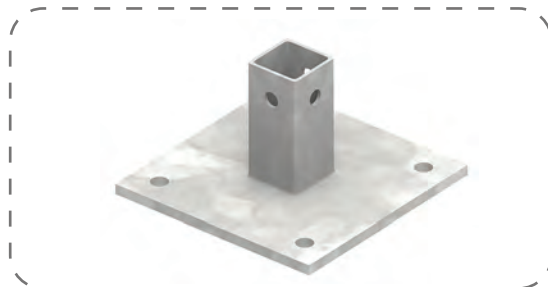
## Details

- **Gate Pair:** two gates can replace a Full Length Standard Rail without any adjustment of the base weights; gate latch can be padlocked for secure latch closure.
- **Single Gate:** gate latch can be padlocked for secure latch closure.
- **Gate Brace:** supports the gate, eliminates gate sag & enhances the pivot action; useful where the gate is constantly opened and closed; allows the gate to be padlocked to the adjacent rail.

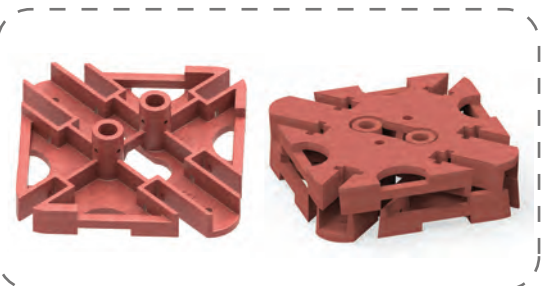
# BASES



Bolt Down Base (for 2 posts)



Bolt Down Base (for 1 post)

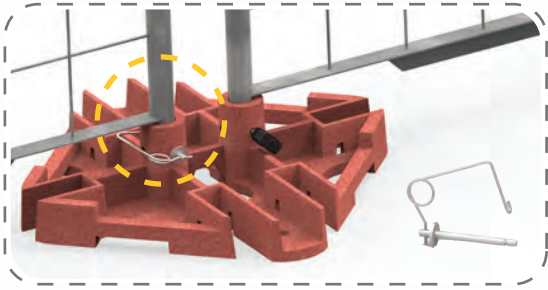


Counterweight Base  
(standalone & stacked)

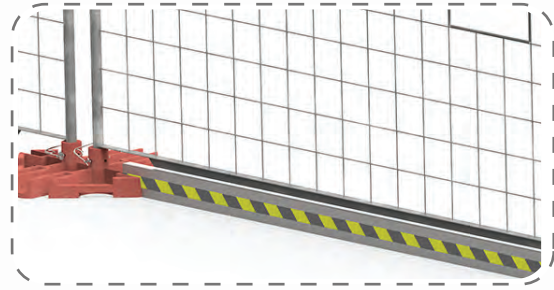
## Counterweight Base Features

- 110 lb cast iron counterweight - 21" x 21" square
- Two female hubs allow rails to be installed and pinned at 180°, 90° and 45°
- Six toeboard brackets accept uncut 2" x 4" x 10' wood studs at 180°, 90° and 45°

## PINS & TOEBOARDS



Standard Pin



Aluminum Toeboard

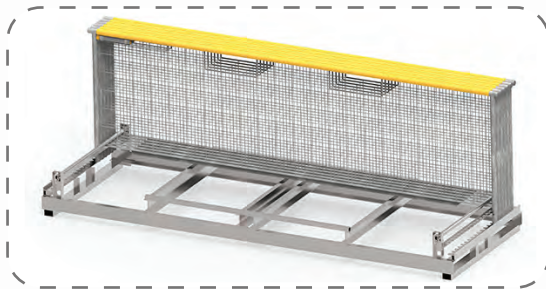
## TRANSPORT & HANDLING



Transporter



5 Rail Cart



20 Rail Steel Pallet

[www.superchute.com](http://www.superchute.com)  
Toll Free: 800-363-2488  
Local: 514-365-6121  
Fax: 514-365-8987  
E-Mail: [info@superchute.com](mailto:info@superchute.com)

Superchute Ltd.  
8810 Elmslie Road  
Montreal, Quebec  
Canada, H8R 1V6



- Made in Canada
- Consult the Superchute® reference guide or manual for more information
- For clients in the USA: Free Trade applies - No import duties or taxes
- Superchute® is a registered trademark of Superchute Ltd. (US Trademark 1737832)
- EdgeGuard® is a patented & registered trademark of Superchute Ltd. (CND Trademark TMA634543 US Trademark 3048889)
- Printed in Canada